

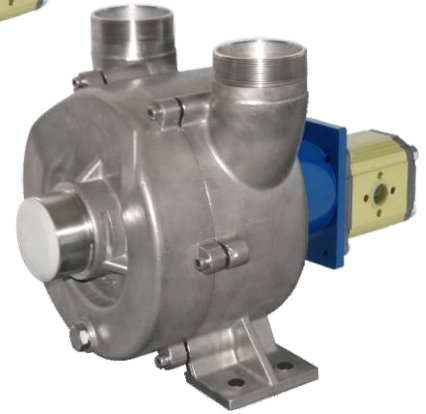
MID 40-50



MID MASTER 2"



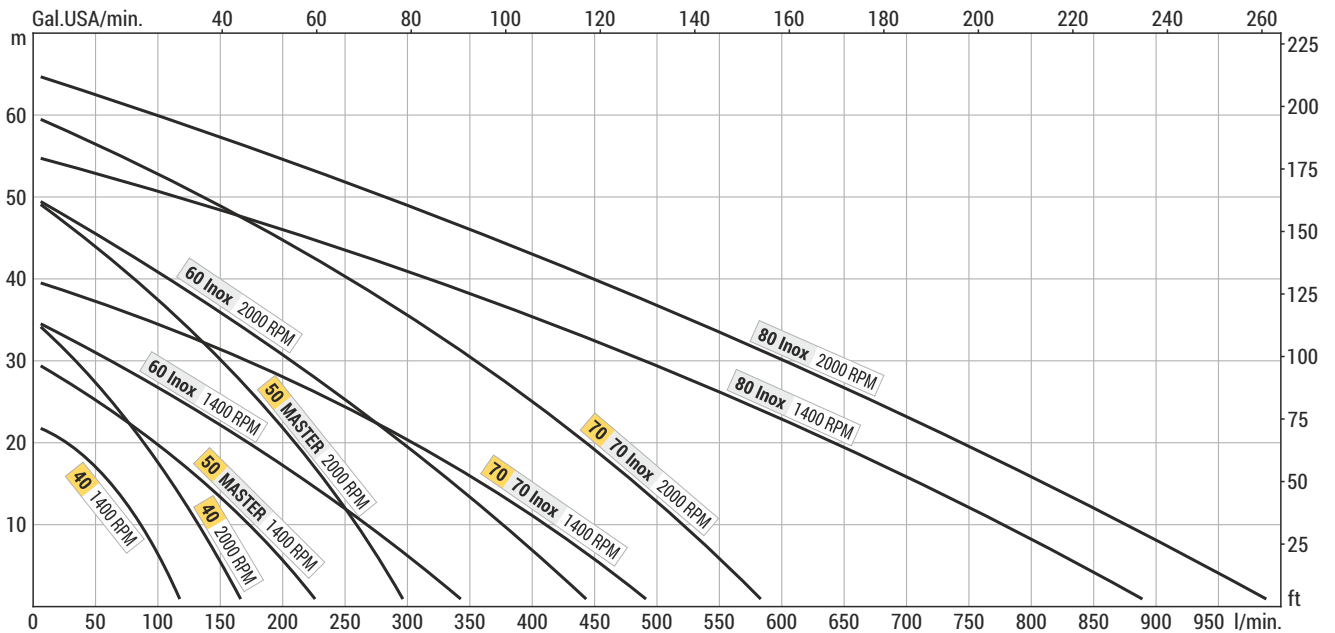
MID 70 Inox



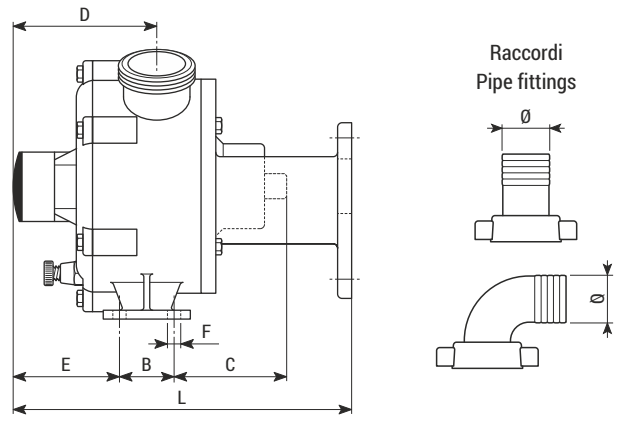
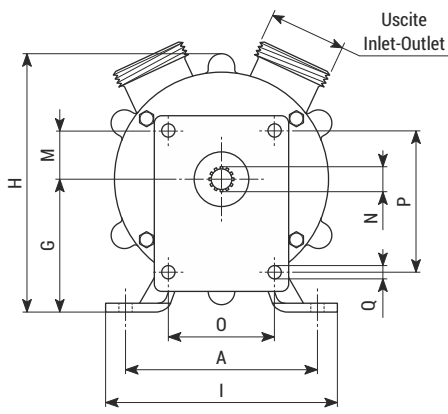
MID 80 Inox

Modello Type	Materiale Material	Giri/minuto RPM	kW *	H = Prevalenza (metri) / Head (meters) - Q = Portata (litri/minuto) / Capacity (liters/minute)															
				0	5	10	15	18	22	24	30	35	40	50	55	60	65	H	
MID 40	Bronzo	standard	1400	1.10	120	105	85	62	45	0									
	Bronze	max	2000	1.85	170	150	133	110	100	80	70	35	0						
MID 50	Bronzo	standard	1400	1.85	230	205	175	140	120	80	60	0							
	Bronze	max	2000	3.0	300	280	260	235	220	200	190	150	120	80	0				
MID 70	Bronzo	standard	1400	7.5	500	455	415	365	330	280	255	165	90	0					
	Bronze	max	2000	11.0	590	555	520	485	460	430	410	375	320	255	140	70	0		
MID MASTER 2"	Inox AISI 316	standard	1400	1.85	230	205	175	140	120	80	60	0							
	S.S. AISI 316	max	2000	3.0	300	280	260	235	220	200	190	150	120	80	0				
MID 60 Inox 2"	Inox AISI 316	standard	1400	4.0	350	310	265	220	190	150	130	60	0						
	S.S. AISI 316	max	2000	5.5	450	415	375	335	315	280	260	210	160	110	0				
MID 70 Inox	Inox AISI 316	standard	1400	7.5	500	455	415	365	330	280	255	165	90	0					
	S.S. AISI 316	max	2000	11.0	590	555	520	485	460	430	410	375	320	255	140	70	0		
MID 80 Inox	Inox AISI 316	standard	1400	15.0	900	840	780	720	660	620	580	500	410	310	110	0			
	S.S. AISI 316	max	2000	22.5	1000	940	875	810	770	720	690	600	530	450	280	190	100	0	

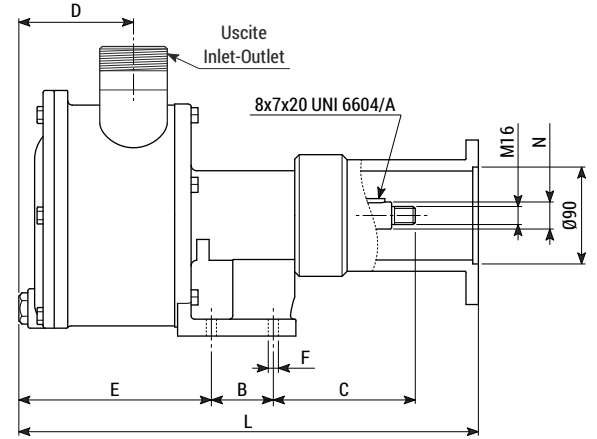
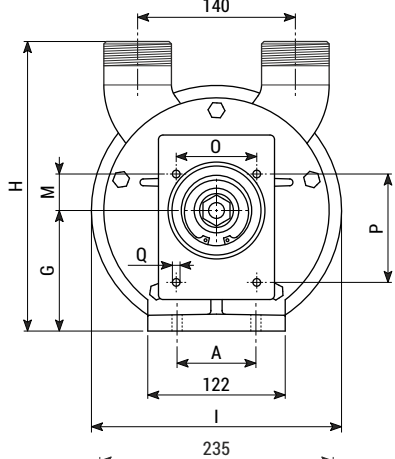
* = Potenza richiesta / Required power



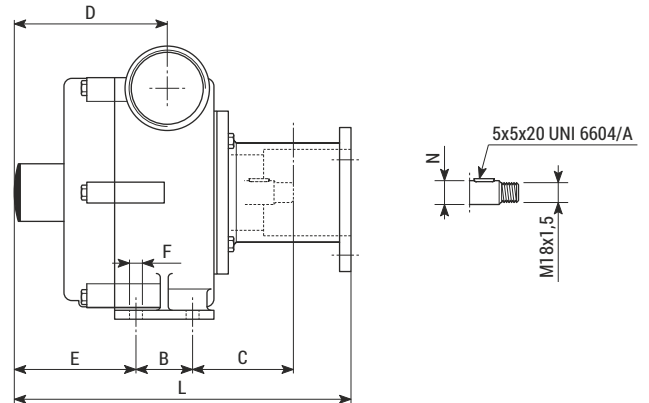
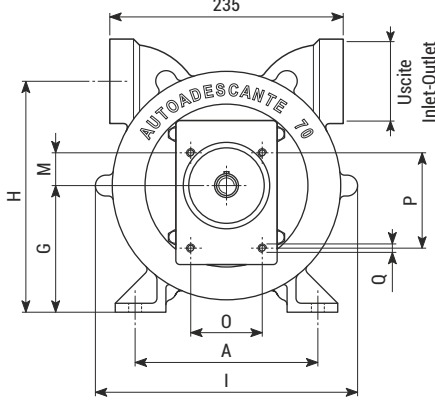
**MID 40-50
MID MASTER 2"**



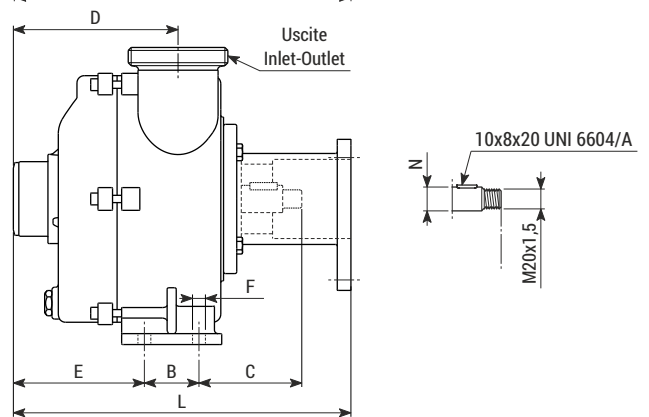
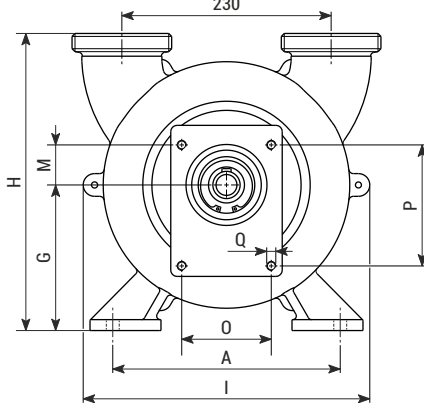
MID 60 Inox 2"



**MID 70
MID 70 Inox**



MID 80 Inox



Tipo Type	Peso Weight	Uscite Inlet-Outlet	Raccordi Pipe fittings	Dimensioni (mm) / Dimensions (mm)															
				A	B	C	D	E	F	G	H	I	L	M	N	O	P	Q	
MID 40	7.2 kg	BSP-M 1"1/2	Ø40	130	37	78	105	76	Ø9	90	175	157	235	33	Ø16,8 - z14	72	96	Ø9	
MID 50	11.4 kg	BSP-M 2"	Ø50	160	40	84	125	91	Ø11	120	225	188	265	33	Ø19,8 - z17	72	96	Ø9	
MID 70	25.5 kg	BSP-F 2"1/2	n.d.	184	57	102	144	110	Ø13	128	231	260	330	33	Ø24	72	96	M8	
MID MASTER 2"	11.3 kg	BSP-M 2" *	Ø50 **	160	40	85	125	91	Ø11	120	225	188	270	33	Ø19,8 - z17	72	96	Ø9	
MID 60 Inox 2"	14.9 kg	BSP-M 2" *	Ø50 **	70	55	123	102	171	Ø9	107	258	222	409	33	Ø24	72	96	M8	
MID 70 Inox	21.4 kg	BSP-F 2"1/2 *	n.d.	184	57	102	144	110	Ø13	128	231	260	330	33	Ø24	72	96	M8	
MID 80 Inox	40.0 kg	Garolla 80	n.d.	250	60	113	181	144	Ø13	160	327	315	371	44	Ø30	98.4	133	M10	

* = Uscite standard BSP (Gas), altre uscite disponibili p.30 / Standard inlet-outlet BSP (Gas), different inlet-outlet are available see p.30

** = Raccordi in acciaio inox o nylon a richiesta / Stainless steel or nylon pipe fittings on request

n.d. = Raccordi non disponibili / Pipe fittings not available