

Elettropompe autoadescanti in bronzo a giranti stellari multistadio ad alta e altissima prevalenza largamente utilizzate nel settore nautico per i servizi di sentine, antincendio, lavaggio catene, travaso di gasolio, ecc.

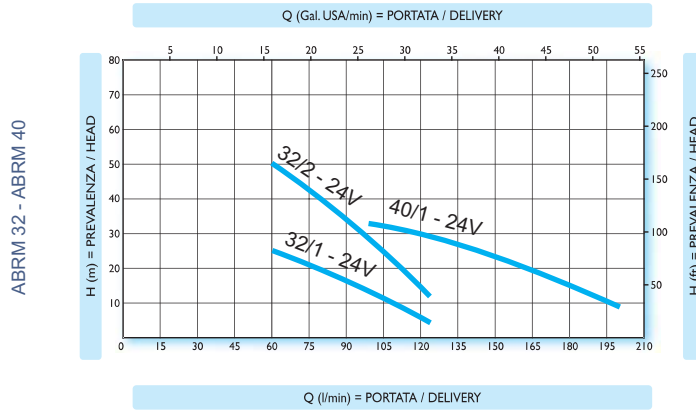
*Multi-stage high pressure selfpriming electric pumps made of bronze fitted with radial impeller. These electric pumps are widely used in the nautical sector to empty bilges, to supply anti-fire equipment, to wash chains and for diesel-oil transfer*



**PRESTAZIONI**

**PERFORMANCES**

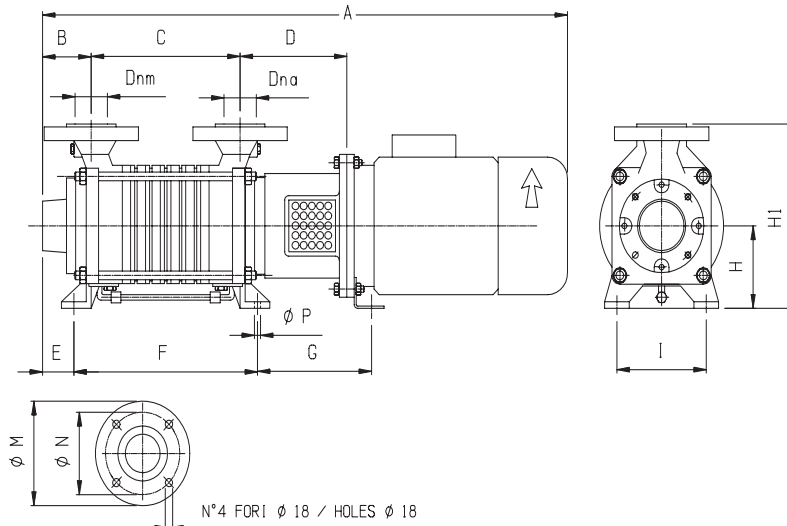
**CORRENTE CONTINUA (C.C.) / DIRECT CURRENT (D.C.)**



| Tipo<br>Type | Volt<br>Voltage<br>(V) | Potenza<br>Power |      | Amperaggio max.<br>Max. amperage<br>(A) | Giri/min.<br>RPM | Aspirazione max.<br>Max. inlet<br>(m) | Portata max.<br>Max. delivery<br>(l/min) | Prevalenza max.<br>Max. head<br>(m) |
|--------------|------------------------|------------------|------|---|------------------|---------------------------------------|--|-------------------------------------|
|              |                        | (HP)             | (KW) |   |                  |                                       |  |                                     |
| ABRM 32/1    | 24 V                   | 1,5              | 1,1  | 52                                      | 1500             | 9                                     | 150                                      | 25                                  |
| ABRM 32/2    | 24 V                   | 2                | 1,5  | 90                                      | 1500             | 9                                     | 150                                      | 50                                  |
| ABRM 40/1    | 24 V                   | 2                | 1,5  | 90                                      | 1500             | 9                                     | 220                                      | 38                                  |

**DIMENSIONI E PESI**

**DIMENSIONS AND WEIGHT**

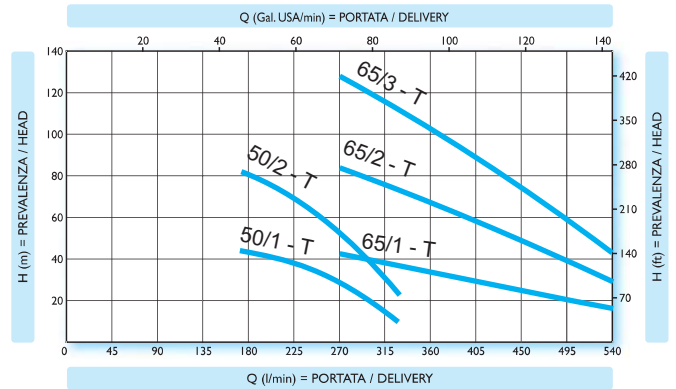
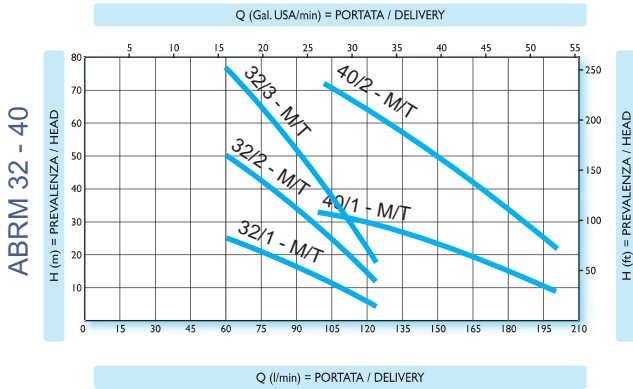


| Tipo<br>Type | Voltaggio<br>Voltage | Dna* | Dnm* | A   | B  | C   | D   | E  | F   | G   | H   | H1  | I   | ØN  | ØM  | ØP | Peso<br>Weight<br>Kg |
|--------------|----------------------|------|------|-----|----|-----|-----|----|-----|-----|-----|-----|-----|-----|-----|----|----------------------|
| ABRM 32/1    | 24 V                 | 32   | 32   | 690 | 70 | 144 | 165 | 40 | 210 | 170 | 112 | 247 | 135 | 100 | 140 | 12 | 56                   |
| ABRM 32/2    | 24 V                 | 32   | 32   | 730 | 70 | 184 | 165 | 40 | 250 | 170 | 112 | 247 | 135 | 100 | 140 | 12 | 60                   |
| ABRM 40/1    | 24 V                 | 40   | 40   | 785 | 97 | 152 | 226 | 58 | 230 | 197 | 132 | 272 | 155 | 110 | 150 | 12 | 70                   |

\* Filetto / Thread = BSP-F (Gas)



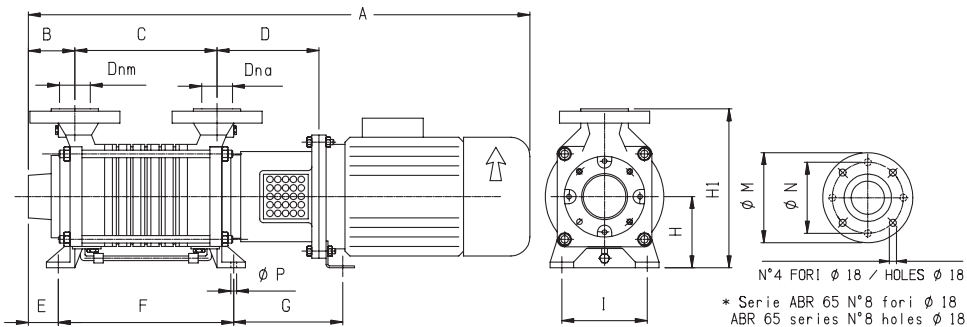
CORRENTE ALTERNATA (C.A.) / ALTERNATE CURRENT (A.C.)



| Tipo<br>Type | Volt<br>Voltage<br>(V) | Potenza<br>Power |      | Giri/min.<br>RPM | Aspirazione max.<br>Max. inlet<br>(m) | Portata max.<br>Max. delivery<br>(l/min) | Prevalenza max.<br>Max. head<br>(m) |
|--------------|------------------------|------------------|------|------------------|---------------------------------------|--|-------------------------------------|
|              |                        | (HP)             | (KW) |                  |                                       |  |                                     |
| ABRM 32/1    | 230 M                  | 1,5              | 1,1  | 1500             | 9                                     | 150                                      | 25                                  |
|              | 230-400 T              | 1,5              | 1,1  | 1500             | 9                                     | 150                                      | 25                                  |
| ABRM 32/2    | 230 M                  | 2,5              | 1,8  | 1500             | 9                                     | 150                                      | 50                                  |
|              | 230-400 T              | 2,5              | 1,8  | 1500             | 9                                     | 150                                      | 50                                  |
| ABRM 32/3    | 230 M                  | 4                | 3    | 1500             | 9                                     | 150                                      | 78                                  |
|              | 230-400 T              | 4                | 3    | 1500             | 9                                     | 150                                      | 78                                  |
| ABRM 40/1    | 230 M                  | 3                | 2,2  | 1500             | 9                                     | 220                                      | 38                                  |
|              | 230-400 T              | 3                | 2,2  | 1500             | 9                                     | 220                                      | 38                                  |
| ABRM 40/2    | 230 M                  | 5,5              | 4    | 1500             | 9                                     | 220                                      | 75                                  |
|              | 230-400 T              | 5,5              | 4    | 1500             | 9                                     | 220                                      | 75                                  |
| ABRM 50/1    | 230-400 T              | 5,5              | 4    | 1500             | 9                                     | 400                                      | 42                                  |
| ABRM 50/2    | 230-400 T              | 12,5             | 9,2  | 1500             | 9                                     | 400                                      | 82                                  |
| ABRM 65/1    | 230-400 T              | 10               | 7,5  | 1500             | 9                                     | 600                                      | 45                                  |
| ABRM 65/2    | 230-400 T              | 20               | 15   | 1500             | 9                                     | 600                                      | 85                                  |
| ABRM 65/3    | 230-400 T              | 30               | 22   | 1500             | 9                                     | 600                                      | 130                                 |

DIMENSIONI E PESI

DIMENSIONS AND WEIGHT



| Tipo<br>Type | Voltaggio<br>Voltage | Dna* | Dnm* | A    | B   | C   | D   | E   | F   | G   | H   | H1  | I   | $\phi$ N | $\phi$ M | $\phi$ P | Peso<br>Weight<br>Kg |
|--------------|----------------------|------|------|------|-----|-----|-----|-----|-----|-----|-----|-----|-----|----------|----------|----------|----------------------|
| ABRM 32/1    | C.A.-A.C.            | 32   | 32   | 680  | 70  | 144 | 165 | 40  | 204 | 170 | 112 | 247 | 135 | 100      | 140      | 12       | 40                   |
| ABRM 32/2    | C.A.-A.C.            | 32   | 32   | 720  | 70  | 184 | 165 | 40  | 244 | 170 | 112 | 247 | 135 | 100      | 140      | 12       | 44                   |
| ABRM 32/3    | C.A.-A.C.            | 32   | 32   | 760  | 70  | 224 | 165 | 40  | 284 | 170 | 112 | 247 | 135 | 100      | 140      | 12       | 62                   |
| ABRM 40/1    | C.A.-A.C.            | 40   | 40   | 780  | 97  | 152 | 226 | 60  | 228 | 197 | 132 | 272 | 155 | 110      | 150      | 12       | 58                   |
| ABRM 40/2    | C.A.-A.C.            | 40   | 40   | 840  | 97  | 207 | 226 | 60  | 283 | 197 | 132 | 272 | 155 | 110      | 150      | 12       | 75                   |
| ABRM 50/1    | C.A.-A.C.            | 50   | 50   | 825  | 97  | 171 | 227 | 60  | 251 | 197 | 160 | 325 | 170 | 125      | 165      | 14       | 82                   |
| ABRM 50/2    | C.A.-A.C.            | 50   | 50   | 1100 | 97  | 246 | 278 | 60  | 328 | 220 | 160 | 325 | 170 | 125      | 165      | 14       | 132                  |
| ABRM 65/1    | C.A.-A.C.            | 65   | 65   | 995  | 117 | 190 | 267 | 110 | 270 | 215 | 180 | 360 | 195 | 145      | 185      | 14       | 125                  |
| ABRM 65/2    | C.A.-A.C.            | 65   | 65   | 1225 | 117 | 280 | 296 | 110 | 360 | 235 | 180 | 360 | 195 | 145      | 185      | 14       | 202                  |
| ABRM 65/3    | C.A.-A.C.            | 65   | 65   | 1470 | 117 | 370 | 296 | 110 | 450 | 235 | 180 | 360 | 195 | 145      | 185      | 14       | 240                  |

\* Filetto / Thread = BSP-F (Gas)